

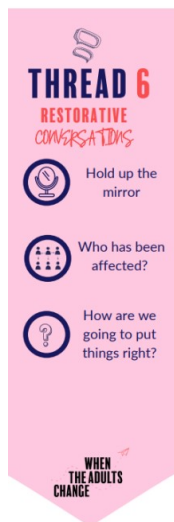
# Supporting your child at home



- ◆ Please ensure your child is wearing the correct school uniform as stated in the uniform policy including black school shoes.
- ◆ Please make sure all school uniform is clearly named.
- ◆ Please send your child in P.E uniform on Wednesday. Plain black joggers or plain black shorts or plain black leggings, plain white shirt and school jumper/cardigan. (Remember no logos).
- ◆ Please send your child with their bookbags to school every-day.

## Thread Six

This half term we are focusing on Thread 6.



## Dates for your Diary

**Wednesday 5th June** - 'France Day' come to school dressed in red, white and blue

**Friday 14th June** - Reception trip to Dudley Zoo

**Friday 28th June** - Class 2 assembly at 9:30am

**Friday 5th July** - Class 1 assembly at 9:30am

**Wednesday 10th July** - End of year reports sent to parents

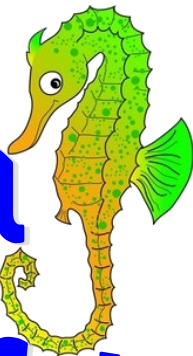
**Thursday 11th July** - Parents Evening Drop in 3:30-4:30pm

**Friday 12th July** - Sports Day - Your child will need a t-shirt in the colour of their house - red (Mars), blue (Saturn), yellow (Jupiter) or green (Neptune).

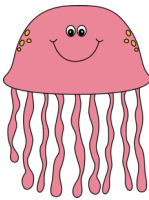
**Friday 19th July** - school breaks up for Summer Holidays at 1:45pm



Foundation Topic  
Summer Term  
June – July

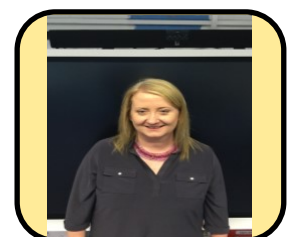
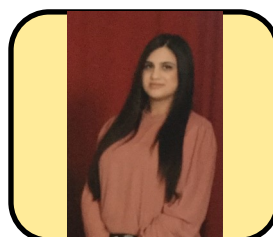


# What a Wonderful World



Miss Arshad

Mrs Evans



# Our new topic is: What a Wonderful World...

## Prime Areas

### Personal, Social and Emotional Development

This half term I will be learning about the school value of resilience. I will be working towards a simple goal, being able to wait for what I want and control my immediate impulses when appropriate. I will continue to use strategies to regulate my behaviour. I will show sensitivity to my own and to other's needs. I will show confidence when trying new activities and show independence, resilience and perseverance in the face of a challenge.



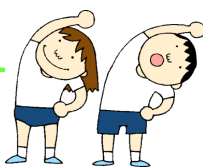
### Communication and Language

This half term I will be developing my vocabulary about animals and habitats. I will learn to express my ideas and feelings about my experiences using full sentences. I will use a range of tenses including past, present and future and make use of conjunctions with modelling and support from my teacher. I will be learning to make comments about what I have learnt and ask questions to clarify my understanding.



### Physical Development

This half term I will continue to learn to negotiate space and obstacles safely, with consideration for myself and others. I will continue to demonstrate strength, balance and coordination when playing. I will continue to move energetically, such as running, jumping, dancing, hopping, skipping and climbing. I will also continue to hold a pencil effectively in preparation for writing - using a tripod grip. I will be using a range of small tools, including scissors, paint brushes and cutlery. I will also begin to show accuracy and care when drawing.



## Specific Areas



### Literacy

This half term I will use and understand recently introduced vocabulary during discussions about stories, non-fiction, rhymes and poems and during role-play. I will read aloud simple sentences and books that are consistent with my phonic knowledge, including some common exception words. In writing, I will continue to write recognisable letters, most of which are correctly formed. I will continue to spell words by identifying sounds in them and representing the sounds with a letter or group of letters. I will also continue to write simple phrases and sentences that can be read by others.

### Mathematics

This half term I will continue to have a deep understanding of number 10, including the composition of each number. I will understand that doubling is a repeated addition. I will learn to recall number bonds to 10, including double facts. I will be learning to explore and represent patterns within numbers up to 10, including evens and odds, double facts and how quantities can be distributed equally.



### Understanding the World

This half term I will be learning about different animals and their habitats. I will continue to explore the natural world around me, making observations and drawing pictures of animals and plants. I will learn about some similarities and differences between the natural world around me and contrasting environments, drawing on my experiences and what has been read in class. I will also be learning to understand some important processes and changes in the natural world around me, including the seasons and changing states of matter.



### Expressive Arts & Design

This half term I will continue to explore mixing colours. I will share creations, explaining the process I have used and describe what I have made. I will also continue to perform songs, rhymes, poems and stories with others and when appropriate I will try to move in time with music.

